



# SAMPSON WAY CONCEPTUAL DESIGN CRA/LA PACIFIC CORRIDOR CAC MEETING APRIL 13, 2011

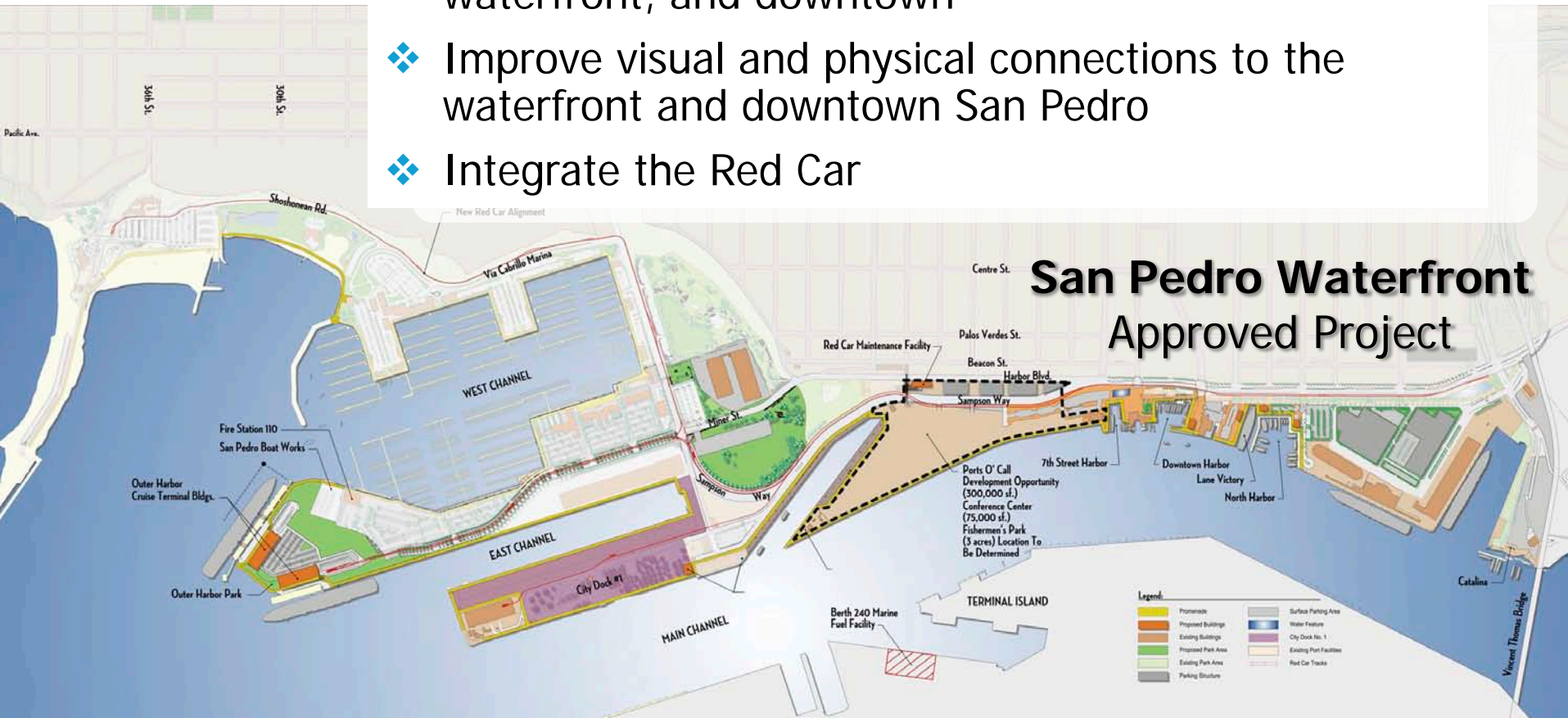


# Approved Waterfront Plan

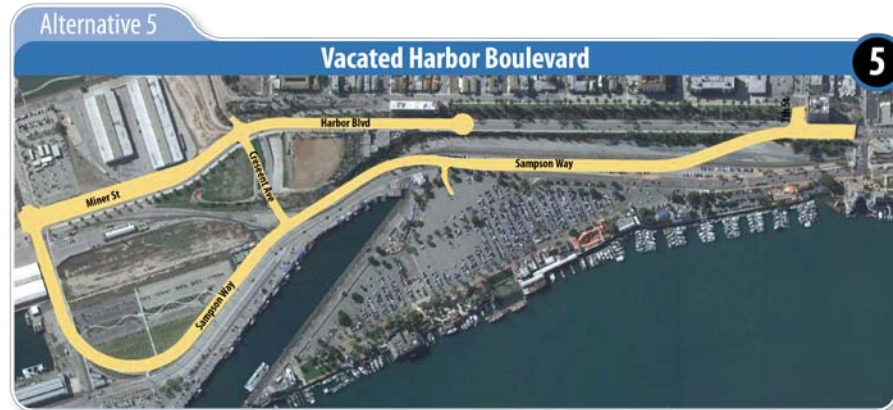


# Sampson Way Improvements Project Goals

- ❖ Transform Sampson Way into a Waterfront Boulevard
- ❖ Promote a pedestrian/multi-modal environment that improves connections to Ports O' Call, the waterfront, and downtown
- ❖ Improve visual and physical connections to the waterfront and downtown San Pedro
- ❖ Integrate the Red Car



# Preferred Alternatives — Roadway



# Alternative 1 - EIR Project





# Alternative 1

## EIR Project — Pros and Cons

### Pros

- EIR does not need to be re-assessed
- Pedestrian and multi-modal connections and considerations met
- Most turn movements are accommodated
- Meets future traffic needs

### Cons

- Large intersection to cross for pedestrians
- Retaining walls needed along waterfront side
- Relatively long signal cycle

# Alternative 2 - T-Intersection





# Alternative 2

## T-Intersection — Pros and Cons

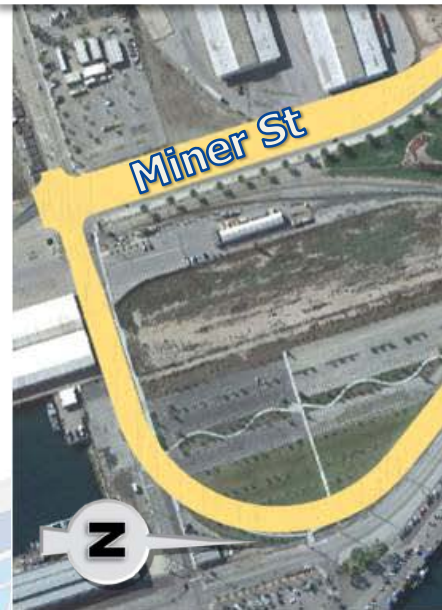
### Pros

- Pedestrian and multi-modal connections and considerations met
- All turn movements are accommodated
- Smaller intersection improves pedestrian connectivity
- Additional open space near Plaza Park

### Cons

- Reduced queue storage along Sampson Way due to consecutive intersections
- Retaining wall required along Harbor Blvd. near Plaza Park and along the waterfront
- Reduced proposed parking structure area

# Alternative 4 – Reduced Lanes on Harbor Boulevard





# Alternative 4

## Reduced Lanes on Harbor

### Pros and Cons

#### Pros

- EIR may not need to be re-assessed
- Improved pedestrian and multi-modal connections
- Smaller intersection to cross
- Improved intersection LOS
- Additional open space at Plaza Park

#### Cons

- Medium sized intersection to cross
- Retaining walls along waterfront side
- Fewer turn movements accommodated versus EIR Project
- Traffic may queue at reduced Harbor Blvd

# Alternative 5 – Vacated Harbor Boulevard





# Alternative 5 Vacated Harbor Pros and Cons

## Pros

- Improved pedestrian crossing at 7th Street
- Smaller intersection
- Additional open space at Plaza Park
- Additional vehicle traffic on Sampson

## Cons

- Supplemental EIR
- Potential conflicts with other aspects of waterfront
- Increased traffic on Sampson and Beacon
- Street vacation process



LAWaterfront

# Sampson Way Next Steps

**opportunities for additional input**

project's website: [www.lawaterfront.org](http://www.lawaterfront.org)

**Until April 30, 2011**

**Next Meeting**

**July, 2011**